



New Product – Key Facts

Product:

Chain Vice

- Design allows for the chain to be looped around the pipe and fastened

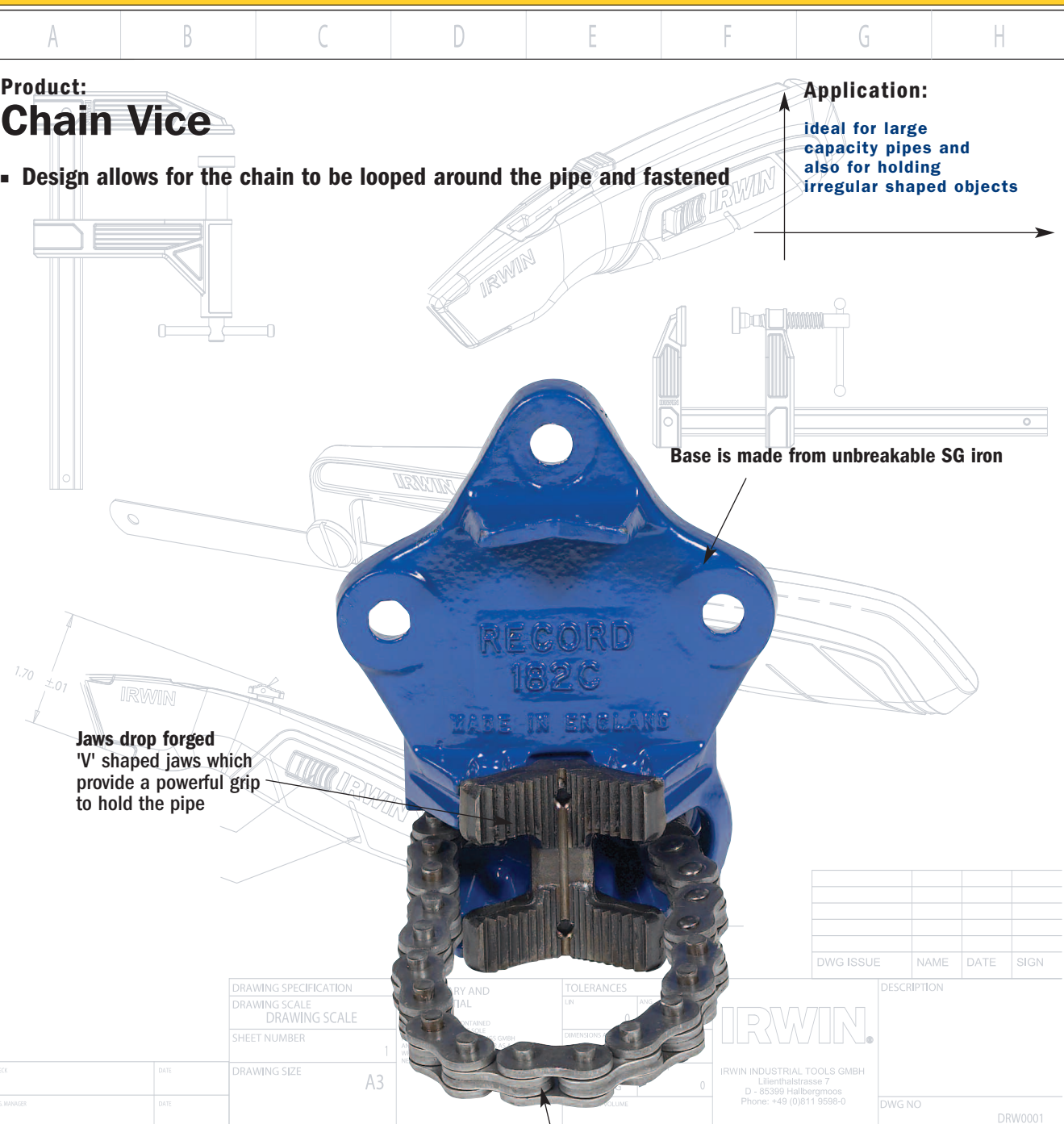
Application:

ideal for large capacity pipes and also for holding irregular shaped objects

Base is made from unbreakable SG iron

Jaws drop forged 'V' shaped jaws which provide a powerful grip to hold the pipe

Chain
High tensile steel chain is looped over the pipe and locked into place



DWG ISSUE	NAME	DATE	SIGN

DRAWING SPECIFICATION	
DRAWING SCALE	
DRAWING SCALE	
SHEET NUMBER	
DRAWING SIZE	A3

IRWIN IRWIN INDUSTRIAL TOOLS GMBH Lilienthalstrasse 7 D - 85399 Hallbergmoos Phone: +49 (0)811 9598-0	DESCRIPTION
	DWG NO DRW0001

CHAIN WRENCHES				
Part #	Description	EAN	Shelf Pack	Master Qty
181C	Chain pipe vice 3-50 mm (1/8"-2")	0734442143161	1	-
182C	Chain pipe vice 6-100 mm (1/4"-4")	0734442143284	1	-
183C	Chain pipe vice 12-200 mm (1/2"-8")	0734442143406	1	-